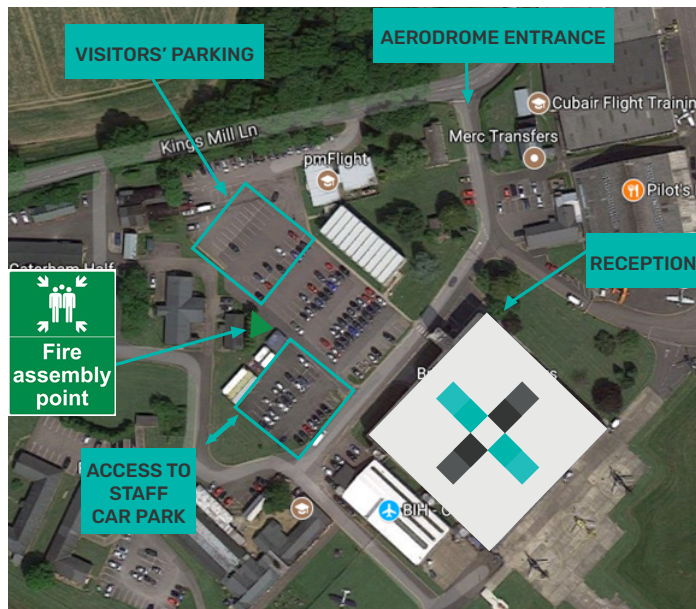
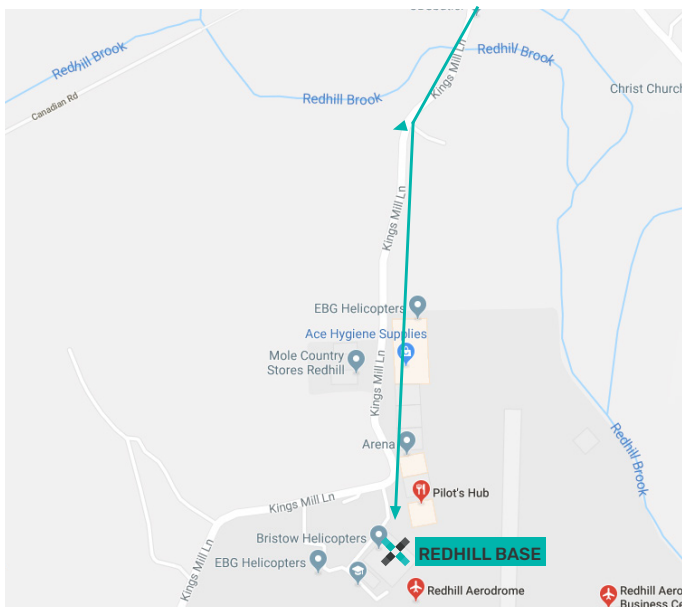


# How to find us - Redhill Aerodrome

Hanger 10, Redhill Aerodrome, Redhill, Surrey, RH1 5JY



## By car

From the North, East or West: M25 J8, head for A23 southbound through Redhill town centre. Follow signs to East Surrey Hospital and then to Redhill Aerodrome.

From the South: Leave the M23 at J9 for Gatwick and head north on A23. Follow signs to East Surrey Hospital and then to Redhill Aerodrome.

Take the entrance to the Aerodrome off Kings Mill Lane. Air Ambulance Kent Surrey and Sussex building/reception is on the left, carry on passed and turn right into the visitor carpark.

## Parking

Visitor parking spaces are available as shown above.

## Rail links

The most convenient train station for Redhill Aerodrome is Redhill.

Redhill Station is served by Southern Rail & Thameslink services from the stations at London Victoria, London Bridge, Clapham Junction, East Croydon, Gatwick Airport & Brighton.

The best way to get from Redhill Station to Redhill Aerodrome is to use RoadRunners Taxi service which will take approx. 10 minutes and should cost about £6.00 per 4 seat car.